

NEW SMART IR CAMERA

NEC

Fixed Mount Type Infrared Thermal Imager
Thermo Tracer

TS9260/TS9230



FA / Production line / Security for High performance Infrared thermography



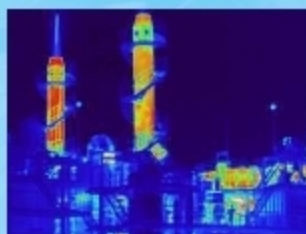
TS9260



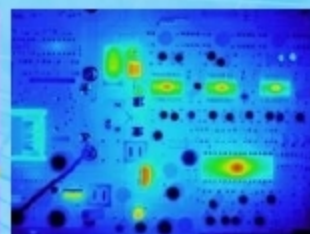
For Production line



TS9230



For security



For Production control

NEC UFPA detector

built in (Made in Japan)

TS9260: High resolution 640 x 480

TS9230: High performance 320 x 240

Basic performance

NETD: 0.06°C@30°C

Accuracy: ±2%(Reading) or ±2°C

Compact & light weight

TS9260: 80 x 87 x 211mm 1.2kg

TS9230: 65 x 65 x 209mm 1.0kg

Toughness & high reliability

Dust & splash proof, IP54

Rugged metal case,

Long-term continuous operation with high and reliable design.

Maintenance free

High reliability UFPA detector and optimization of moving mechanism make maintenance free

Ethernet & IEEE1394

Easy connection to PC

Real time image transfer and various system-up are available by high speed data transfer

Alarm output

Detects abnormal condition and outputs by itself. It makes cost down for the system

High cost performance

Optimizes necessary performance for each application and realizes high cost performance

Rich options

Protection housing, lenses interfaces, peripherals, software development kit etc.

NEC Infrared Instruments

www.irPOD.net info@irPOD.net

Specifications

| Type | TS9260 | TS9230 |
|----------------------------------|--|-----------------------|
| Temperature range | -40°C to 500°C (Range 1: -40 to 120°C, Range2: 0 to 500°C) (Select either standard or option) Option: 200 to 2000°C | |
| NETD | 0.06°C (@30°C, 30Hz) | 0.06°C (@30°C, 60Hz) |
| Accuracy | ±2%(Reading) or ±2°C | |
| Spectral range | 8 to 13µm | |
| Detector | NEC 640 x 480 UFGA | NEC 320 x 240 UFGA |
| Field of view (Standard lens) | 21.7° (H) x 16.4° (V) | |
| I.F.O.V (Standard lens) | 0.6 mrad | 1.2 mrad |
| Focus (Standard lens) | 50 cm. to infinity | |
| Frame rate | 30 frames/sec | 60 frames/sec |
| A/D resolution | 14bit | |
| Measuring function | Run/Freeze, Auto level/Sense, Level trace, Auto gain control | |
| S/N improvement | Σ2, 8, 16 | |
| Correction | Emmissivity / Environment temp / Back ground | |
| Display functions | Color/white and black/Posi/Nega ISO thermal: max 4 bands Multilingual menu | |
| Image processing functions | Level/Sense Multi point(10), Multi emmissivity(10), Max/Min temperature display, Alarm Image filter (Median, Sharpness, etc.) | |
| Image Output | Composite video (NTSC/PAL) | |
| Interfaces | RS232C IEEE1394a (8pin): Option Ethernet (100/10baseT): Option | |
| Operating temp/humidity | -15°C to 50°C / 90%RH or less (Not condensed) | |
| Storage temp/humidity | -40°C to 70°C / 90%RH or less (Not condensed) | |
| Power supply | 11 to 13V DC | |
| Power consumption | 9W (TYP) | 8W (TYP) |
| Shock & Vibration | 294m/s ² (S) / 29.4m/s ² (V) | |
| Environmental protection | IP54 (IEC80529) | |
| Dimensions | 80 x 87 x 211mm | 65 x 65 x 208mm |
| Weight | 1.2 kg | 1.0 kg |

Option

| Type | TS9260 | TS9230 |
|--------------------------|--|---|
| High temp. range | 200 to 2000°C | |
| Protection housing | Operation temp. -15 to 50°C Cool & Perge air | |
| IEEE1394 | Frame rate: 30Hz | Frame rate: 60Hz |
| Ethernet | Frame rate: 7.5Hz | Frame rate: 30Hz |
| Lens | 10.5" telephoto lens 42° wide angle lens | 10.5" telephoto lens 30° wide angle lens |
| Software development kit | Windows2000, Windows XP, Windows Vista | |

System example

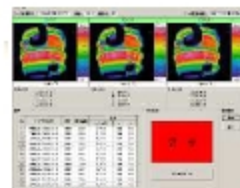
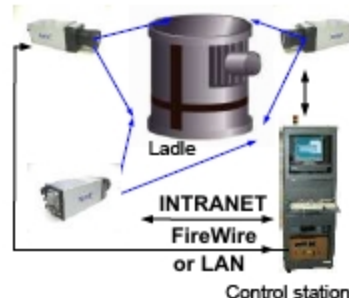
irmotion



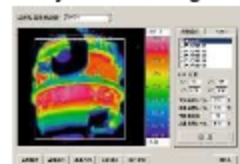
Outline

- This system measures the steel ladle exterior temperature, analyses the data and signals any over-temperature situation.

TS9260/TS9230



System main image



Condition input image

Features

- Automatic monitoring of the steel ladle shell temperature with data analysis enables overheating to be signaled.
- Temperature distribution display indicates problem areas and location for prompt repair.
- Spillages of molten metal are prevented. Potential repair requirements are predicted and locations are automatically specified.

User benefits

- Users can benefit from easy prediction for repairs and prevention of molten iron leakage.



**CAUTION
FOR SAFETY**

Please read "WARNING" & "CAUTION" in the operation manual attached to the product carefully for proper operation before using the product.

irPOD.net

© by ebs ATUS GmbH - Germany
Exclusive importer for Central Europe

+49/89/9 23 06 87-0 +49/89/9 23 06 87-29

www.irPOD.net info@irPOD.net

ebs ATUS GmbH assumes no responsibility for the accuracy of any given information. Technical specifications are subject to change without prior notice. All registered trademarks are proprietary to their owners. The printing or duplication of any material is prohibited without written permission of ebs ATUS GmbH.

Für die Richtigkeit von technischen Daten und sonstigen Angaben übernehmen wir keine Haftung. Technische Änderungen, die dem Fortschritt dienen, sind ohne Ankündigung vorbehalten. Alle Produktbezeichnungen sind eingetragene Warenzeichen ihrer Hersteller. Die Vervielfältigung des Text- und Bildmaterials auf elektronischen, mechanischen oder fototechnischen Weg ist nur mit ausdrücklicher Genehmigung des Urhebers gestattet.

NEC
NEC San-ei

Your local partner
Ihre lokale Vertretung